



FA001DPP

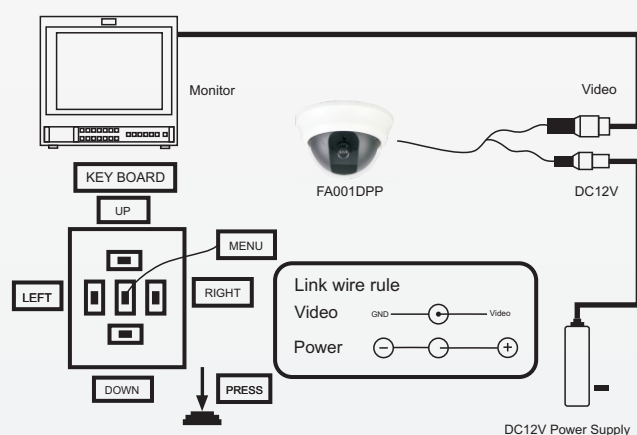
Support :



Key Features

- Plastic Dome Camera Board Lens
- Lens: 3.6mm/F2.0
- Size: ϕ 108x60(H)mm

CONNECTION



FA001DPP Analog CCTV Camera

Image Sensor	1/3" HDIS 800TVL CMOS
Lens	Lens 3.6mm/F2.0
Electronic Shutter	Auto:PAL 1/50-1/100,000Sec;NTSC 1/60-1/100,000Sec
TV System	PAL / NTSC
Horizontal Resolution	800TV Lines Low Illumination DWDR,OSD (DNR, PM, MD)
Effective Pixel	720(H)x576(V)
IR Distance	-
IR Status	-
IR Power ON	-
Usable Illumination	0.001 Lux/F1.2
S/N Ratio	\geq 48dB (AGC OFF)
Power	DC12V \pm 10%, 250mA
Temperature	-10 $^{\circ}$ C-+50 $^{\circ}$ C Rh95% MAX
Ready Use	Indoor
Others	Plastic Housing IP65